



CFB Suffield Elk Hunt 2025-26: Morning registration and briefing summary

CFB Suffield Elk Hunt Management Program (EHMP)

Overview

This document, along with other material (like the General information guide), is meant to better inform and assist hunters preparing for the upcoming elk hunt at Canadian Forces Base (CFB) Suffield.

Registration packages

Upon arrival at the parking lot of the CFB Suffield Recreation Centre in Ralston, Alberta for the morning registration and Safety Briefing, all hunt participants must remain in their vehicles to receive their registration packages. All names will be checked to ensure that only registered hunters are entering the parking lot.

Hunter registration package checklist

Every hunter will receive a hunter registration package containing all the paperwork required, including:

	Hunter package contents list
	Additional registration forms (submitted to hunt staff when requested)
	Waiver form (submitted to hunt staff when requested)
	The FM radio frequency being used to broadcast the morning Safety Briefing. All vehicles will need to tune into this frequency in order to listen to and follow along with the briefing handouts. The briefing should start around 6:45 am, so hunt participants should make sure they are tuned in around that time. Hunt staff should let everyone know that the Safety Briefing is about to start.
	Safety Briefing handouts (for reference and to follow along with the information broadcast via FM radio)
	Acknowledgment of Understanding the Morning Safety Briefing form (submitted to hunt staff when requested)
	Large hunt map
	Handout identifying additional "Temporary Out-of-Bound Area(s)" not already indicated on the large hunt map (if required)
	National Wildlife Area (NWA) draw information

Helper registration package checklist

Every helper will receive a helper registration package containing all the paperwork required, including:

	Helper package contents list
	Waiver form (submitted to hunt staff when requested)
	Acknowledgment of Understanding the Morning Safety Briefing form (submitted to hunt staff when requested)

Visit: <https://mywildalberta.ca/hunting/hunting-draws/cfb-suffield-elk-hunt.aspx>

©2025 Government of Alberta | August 2025 | Forestry and Parks

Morning Safety Briefing

The morning Safety Briefing will provide all the information required to harvest in the Military Range and Training Area (RTA) and the National Wildlife Areas (NWA) at CFB Suffield.

Issues covered at the Safety Briefing

Some points that will be discussed further during the morning session include:

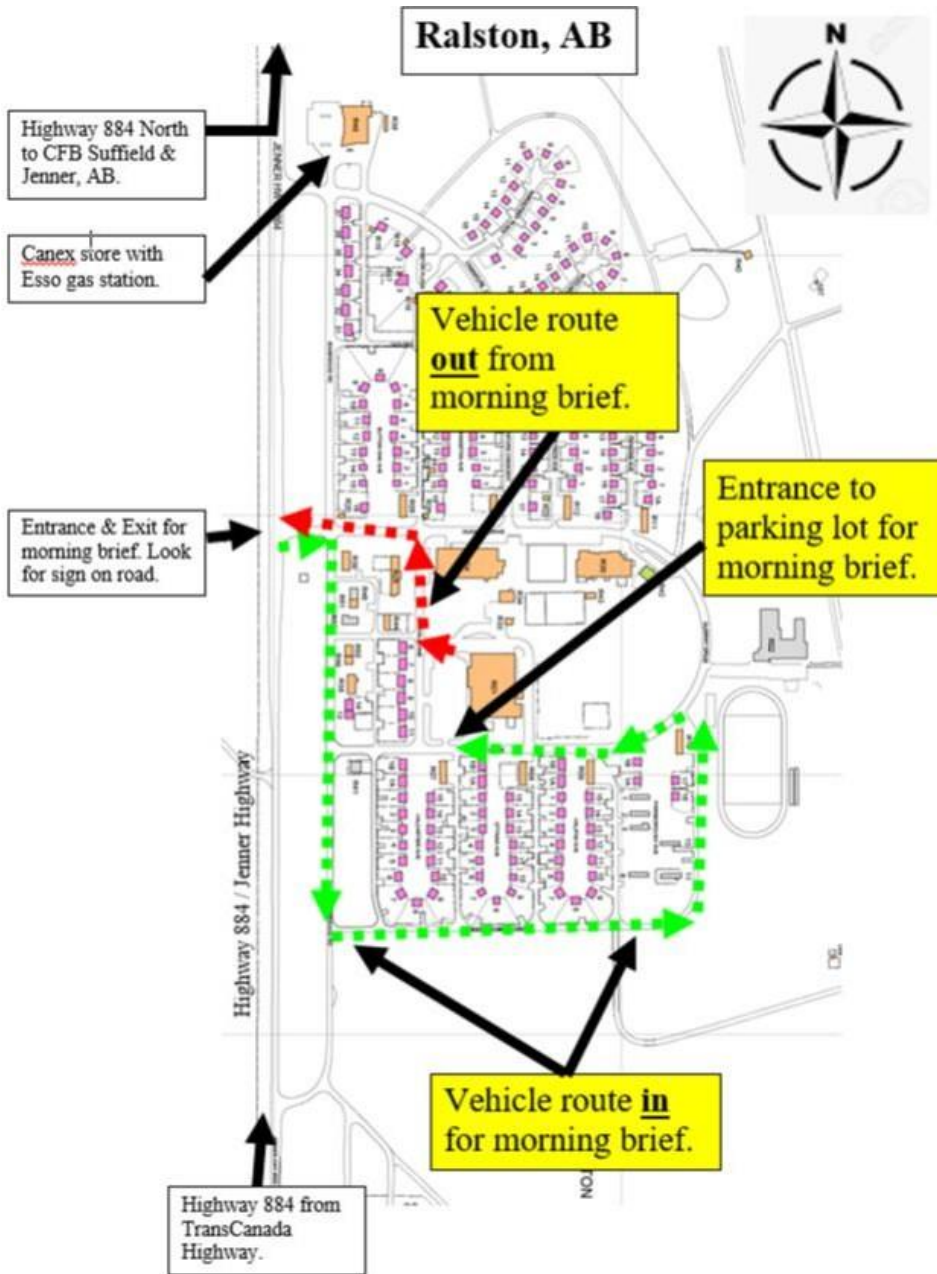
- NO alcohol or drugs are allowed in the RTA or NWA.
- If you plan to enter the draw and hunt in one of the two National Wildlife Area's (NWA), make sure you have the mandatory equipment (compass/dedicated GPS and a flashlight). Water, energy bars and spare batteries are a very good idea. A cart/sled are also highly encouraged as the NWA's are walk in-walk out only.
- Everyone (hunters and helpers) must be 18 years of age or older.
- Everyone (hunters and helpers) is required to wear high visibility colours when outside their vehicle in the RTA or traversing the NWA. There are several high visible colours that work well (example: hunter orange, red, yellow, etc.). Wearing high visible is mandatory and is meant to promote safety.
- Although not likely needed, everyone should be prepared to wear a mask if required.
- Have a fuel plan. The Military Training Area is quite large. There is a CANEX (Esso) gas station close to the morning brief in Ralston, Alberta, but its hours are limited, especially on weekends. The hours are Mon-Fri: 7:30 am – 7:00 pm, and Sat-Sun: 10:00 am - 5:00 pm. Other gas stations in the area are north 54 kilometres in Jenner, Alberta (hours unknown), and east 40 kilometres in Redcliff/Medicine Hat, Alberta (24-hour gas stations are available).
- Have a plan if you get stuck or break down in the Military Training Area. The Military is not allowed to pull vehicles out. Tow companies will not likely enter the Military Training Area when it's near to, or already, dark. Range Control will be able to assist your return to the Base's main entrance, but then you will need to call a taxi to get you to Medicine Hat or elsewhere. Then you'll need to return the next day to continue with your vehicle recovery.
- ATV, snowmobiles, horses, etc. are not allowed.
- Gut piles and/or carcasses can be left in the Military Training Area where the elk was harvested once the useful meat has been removed.
- Hunters can bring a spare rifle, but only one rifle can be outside the vehicle at a time. **Helpers cannot carry a rifle.**
- Hunters cannot leave and come back the same day due to access availability. All hunters must remain in the Military Training Area/Hunt Area until they are ready to leave for the day.
- All hunters should be leaving the RTA at around 6:00 pm daily.

See directions and maps on the following pages.

Visit: <https://mywildalberta.ca/hunting/hunting-draws/cfb-suffield-elk-hunt.aspx>

©2025 Government of Alberta | August 2025 | Forestry and Parks

Map 1: Ralston, Alberta



Visit: <https://mywildalberta.ca/hunting/hunting-draws/cfb-suffield-elk-hunt.aspx>

©2025 Government of Alberta | August 2025 | Forestry and Parks

Canada

Alberta

Map 2: Morning registration parking lot – Ralston, Alberta

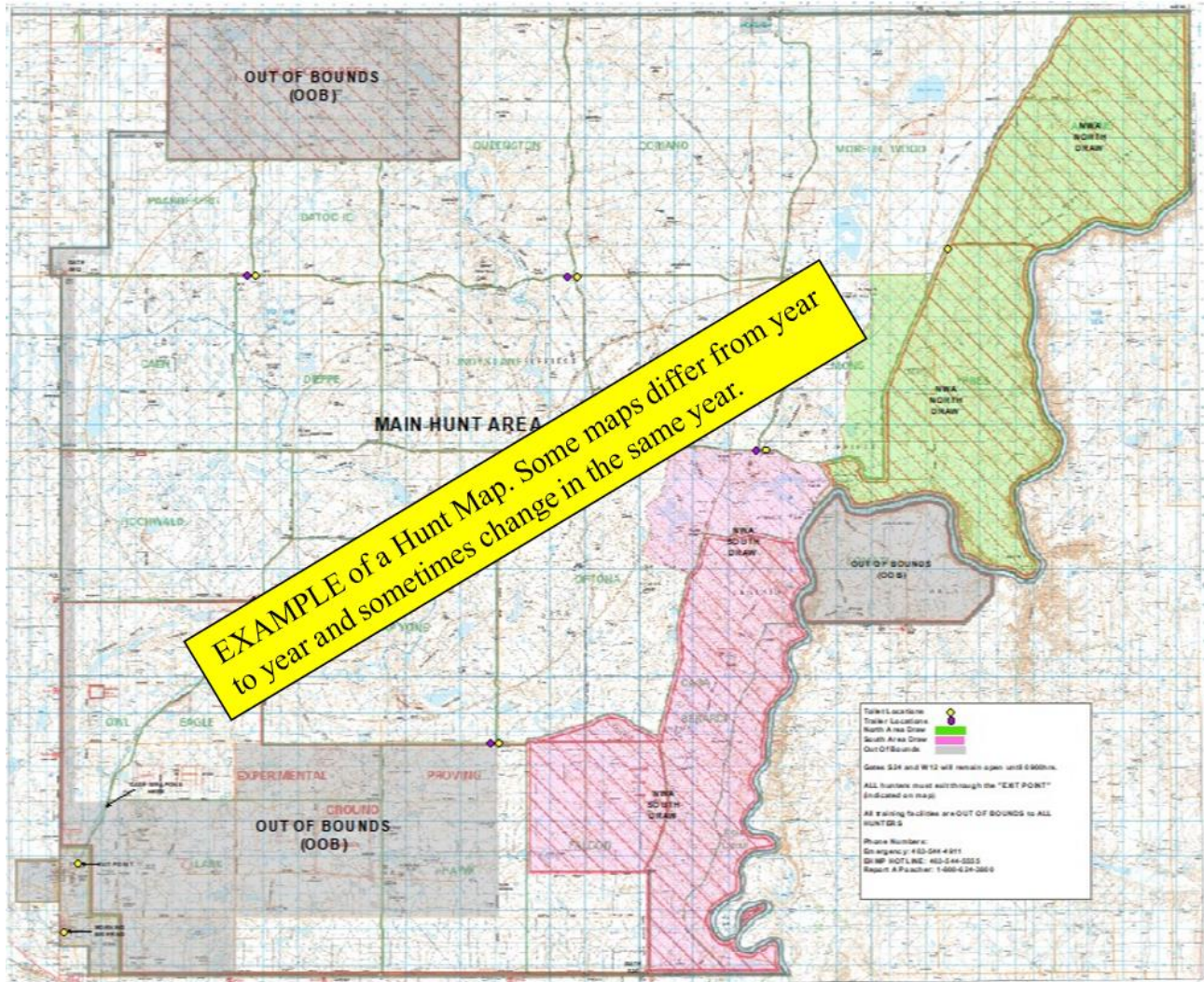
Morning Registration parking lot (Ralston, AB)



Visit: <https://mywildalberta.ca/hunting/hunting-draws/cfb-suffield-elk-hunt.aspx>

©2025 Government of Alberta | August 2025 | Forestry and Parks

Map 3: Large hunt map (example)



Visit: <https://mywildalberta.ca/hunting/hunting-draws/cfb-suffield-elk-hunt.aspx>

©2025 Government of Alberta | August 2025 | Forestry and Parks