



CFB Suffield Elk Hunt 2025-26: Hunting in the National Wildlife Areas (NWA)

CFB Suffield Elk Hunt Management Program (EHMP)

Overview

This document provides general information for those hunters who wish to hunt in one of the two National Wildlife Areas (NWA) at Canadian Forces Base (CFB) Suffield.

General guidelines for hunting in the National Wildlife Areas

- Due to the fact that every effort is being taken to preserve the Prairie and the fragile ecosystem in the National Wildlife Areas, this hunt will limit the number of hunters allowed to enter and hunt the NWAs.
- National Wildlife Areas are “walk-in and walk-out”. There will be NO vehicle access off of main roads in either of the NWAs.
- Hunters must enter a daily draw during the morning registration to be able to hunt one of the two NWAs (See map on page 2. NWA North is the green shaded area and NWA South is the pink area). **Hunters may only draw to hunt one NWA**, either the North or the South.
- A participant’s vehicle license plate will be taken down for entry into the draw. The draw will occur during the morning briefing.
- After the morning brief is done, those who have successfully drawn will be notified. Those drawn will then be issued:
 - additional NWA paperwork
 - an NWA vehicle pass
 - a NWA bracelet
- The NWA bracelet is only good for the day you were drawn. A new NWA draw will be conducted daily and new NWA bracelets will be given out.
- The rules and regulations for hunting in the NWAs at CFB Suffield will be discussed in greater detail during the daily morning brief.

Additional notes

- The National Wildlife Areas are “walk-in and walk-out”.
- Only certain main roads may be used by vehicles. This will be discussed further during the morning brief.
- Hunters must retrieve their elk by foot when hunting in the NWAs.
- Cell phone coverage is very poor in the NWAs.

Mandatory and recommended items

Mandatory items for hunting in the NWAs (You will be asked to prove that you have these items):

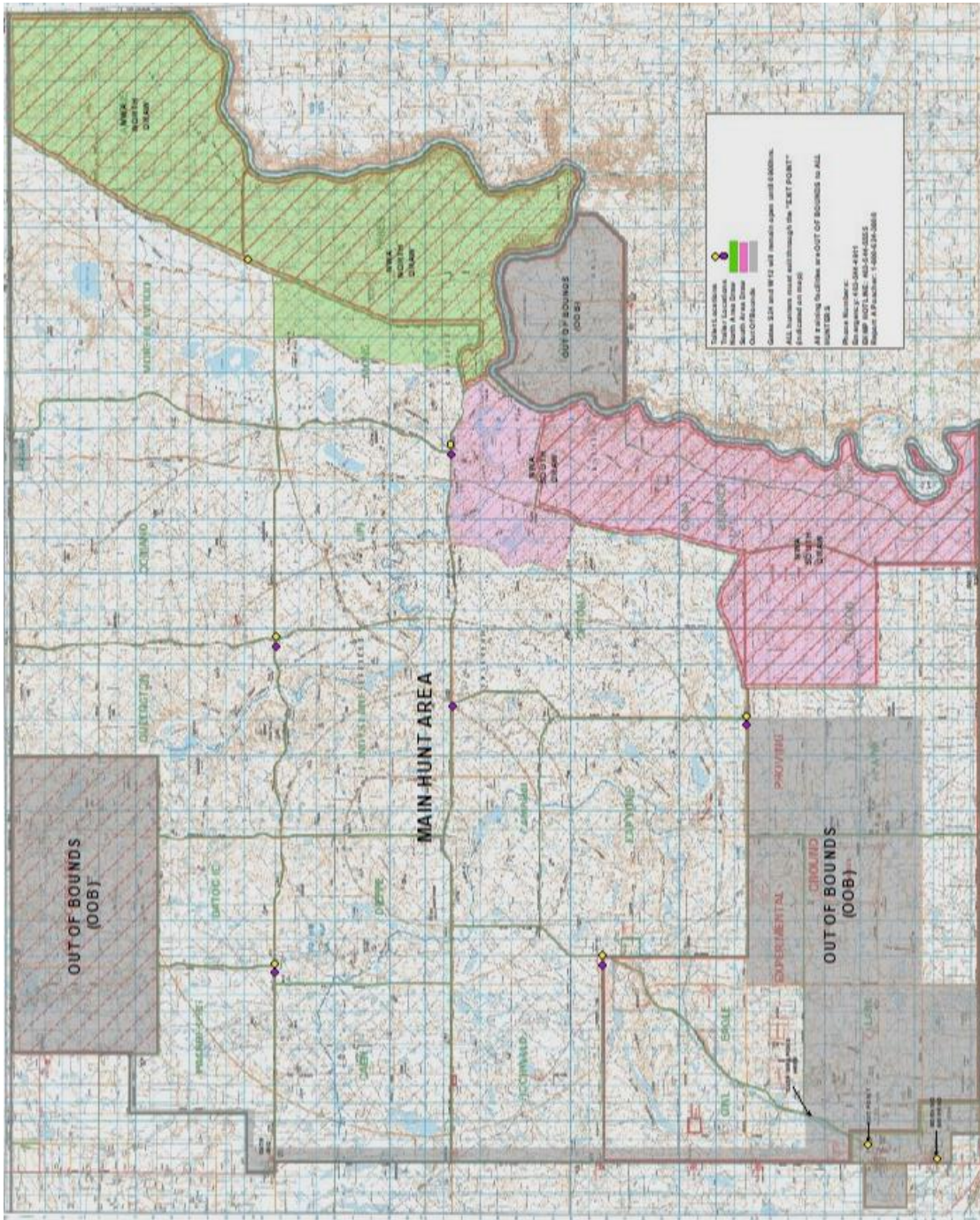
- satellite GPS or compass (iPad or tablet could be used, but not a phone)
- a flashlight.

Also strongly recommended (but not mandatory):

- A method of animal retrieval, such as a game hunting cart or sled.
- Spare batteries for flashlight and GPS.

Map: Large hunt map (example)

The example map below is to show the CFB Suffield National Wildlife Areas (NWAs). The actual hunt boundaries for the Main Hunt Area may differ daily and/or weekly from what is seen in the map. The actual hunt areas will be discussed daily at the morning brief and current hunt maps will be issued to hunters.



Visit: <https://mywildalberta.ca/hunting/hunting-draws/cfb-suffield-elk-hunt.aspx>

©2025 Government of Alberta | August 2025 | Forestry and Parks

Classification: Public