

Wolf Lake

Recreational Fisheries Management Objectives

Version Date: October 2017	Prepared by: Rebecca Skarsen	Reviewed by: Dwayne Latty	Approved by: Kathy Hendren
Waterbody ID: 6185	Surface Area: 3,142 (Ha)	Hydrologic Unit Code Name (HUC_8): Wolf River	Hydrologic Unit Code (HUC_8): 12010203
Sport Fish Species: Walleye, Northern Pike, Lake Whitefish, Yellow Perch, and Burbot			
Indigenous Fishery: Yes			
Environment and Parks Region: Lower Athabasca Region (LAR)		Fisheries Management Zone: Northern Boreal 1 (NB1)	Fisheries Management Office: Cold Lake

Background

This fisheries management objective (FMO) relates to Wolf Lake and all of its tributaries. Corner, Sapphire, Lost Magician, and Lane lakes are also included in this FMO, as well as the outlet stream, the Wolf River, 730m downstream from Lost Magician to 496969 6062819 (UTM 12N). Therefore, any management action identified for Wolf Lake will be applied to Corner, Sapphire, Lost Magician, and Lane lakes. Wolf Lake is a moderately productive (eutrophic) lake with a surface area of 3,142 ha, and is located within a 4 hour drive from Edmonton and a 1 hour drive from the City of Cold Lake. Shoreline development is limited to the Wolf Lake Provincial Recreation Area, which is the only access point on the lake. The Wolf Lake Grazing reserve is set back from the southern shore of Wolf Lake. Some oil and gas activity exists in the area.

From 1995 until 2005, there was a zero harvest regulation for Walleye in Wolf Lake. In 2006, Wolf Lake was one of the first lakes to have a Special Harvest License walleye regulation implemented. Public participation was initially low (6% of licences were purchased) but has subsequently increased (participation is 63% for 2015, with remaining undersubscribed available for purchase).

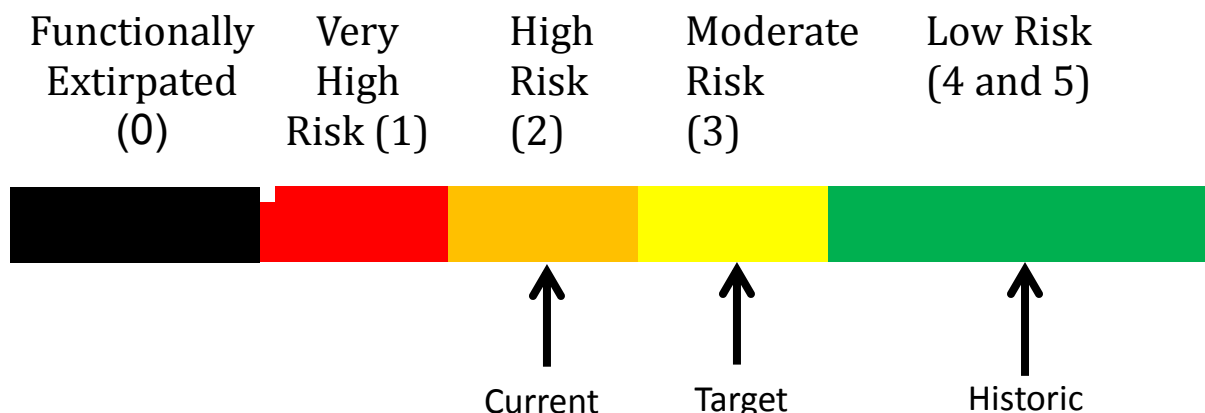
Alberta Health Services (AHS) has issued a consumption advisory for Walleye and Northern Pike in Wolf Lake due to high levels of mercury, see:

- <http://mywildalberta.com/fishing/safety-procedures/documents/FishConsumptionLimitsAlberta-Feb24-2016.pdf>

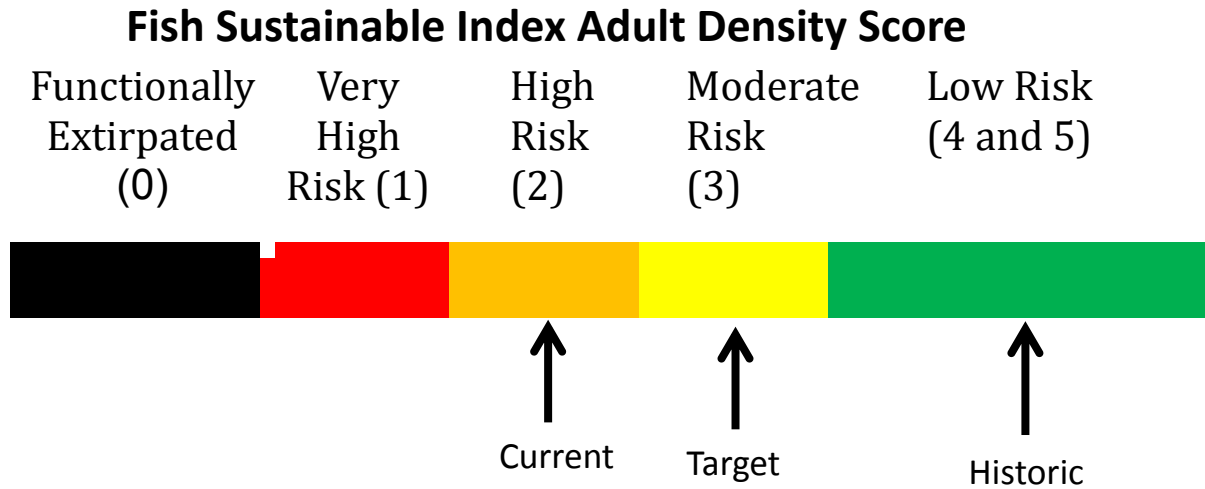
Section 1. Fish Population Status

Walleye – Adult Abundance

Fish Sustainable Index Adult Density Score



Northern Pike – Adult Abundance



Lake Whitefish – Adult Abundance – Undetermined
Yellow Perch – Adult Abundance – Undetermined
Burbot – Adult Abundance – Undetermined

Section 2. Recreational Fishery Management Objectives and Management Summary

Currently, the **focal species** for recreational management is **Walleye**. The secondary species managed for recreational objectives are Northern Pike, Lake Whitefish, Yellow Perch, and Burbot. These sport-fisheries are directly assessed at intervals, and therefore are actively managed. The **Overharvest Protection Need** is assessed as **Moderate**.

Walleye – The recreational fishery management objective for Walleye is currently **Sustainable Harvest**. The corresponding FSI score for the current adult density of Walleye was assessed as (2) or **High Risk** to sustainability. The Walleye population does not currently meet the status and criteria for the objective of a sustainable harvest fishery. The current management action is a **Special Harvest Licence**.

Northern Pike – The recreational fishery management objective for Northern Pike is currently **Sustainable Harvest**. The corresponding FSI score for the current adult density of Northern Pike was assessed at (2) **High Risk** to sustainability. The Northern Pike population is not currently meeting the status and criteria for the objective of a sustainable harvest fishery. The current management action is a harvest regulation of 1 **Northern Pike over 63**. The required management action for Northern Pike will be a **Zero Harvest** regulation.

Lake Whitefish – The recreational fishery management objective being applied is the provincial default (**Sustainable Harvest**). Cisco in Wolf Lake can grow relatively large in size, and may be easily confused for Lake Whitefish. The status of the Lake Whitefish/Cisco population has not been assessed. The current management action is a regulation of a total of **10 Lake Whitefish or Cisco, combined, of any size**.

Yellow Perch – The recreational fishery management objective being applied is the provincial default (**Sustainable Harvest**). The status of the Yellow Perch population has not been assessed. The current management action is a regulation of **15 Yellow Perch of any size**.

Burbot – The recreational fishery management objective being applied is the provincial default (**Sustainable Harvest**). The status of the Burbot population has not been assessed. The current management action is a regulation of **10 Burbot of any size**.

Management Summary

Management Priority	Species	Overharvest Protection Need	Management Action	Sport Fishing Harvest Regulation
1	Walleye	Moderate	Recovery – Sustainable Harvest	SHL
2	Northern Pike	Moderate	Recovery – Sustainable Harvest	<ul style="list-style-type: none"> • 1 > 63 cm (2017-18) • Catch and Release (Implementation April 2018-19)
3	Lake Whitefish/Cisco*	Moderate	Maintenance – Sustainable Harvest	10 any size
4	Yellow Perch*	Moderate	Maintenance – Sustainable Harvest	15 any size
5	Burbot*	Moderate	Maintenance – Sustainable Harvest	10 any size

**Recreational management objectives for Lake Whitefish/Cisco, Yellow Perch, and Burbot have not been fully developed into management frameworks, and will be subject to change pending on-going work and development. However, general action statements have been listed for these species within the context of relative abundance, catch rates and trends associated with index netting assessments, in relation to the management of these species at a provincial level.*