

## Summary Information

<b>Version Date:</b> October 2018	<b>Prepared by:</b> Alicia Pruden-Beniuk	<b>Reviewed by:</b> Dwayne Latty	<b>Approved by:</b> Kathy Hendren
<b>Waterbody ID:</b> 6149	<b>Surface Area:</b> 3038 ha	<b>Hydrologic Unit Code Name (HUC_8):</b> Amisk River	<b>Hydrologic Unit Code (HUC_8):</b> 12010102
<b>Sport Fish Species:</b> Walleye, Northern Pike, Yellow Perch, Lake Whitefish, Burbot			
<b>Indigenous Fishery:</b> Yes			
<b>Environment and Parks Region:</b> Lower Athabasca Region (LAR)	<b>Fisheries Management Zone:</b> Northern Boreal 1 (NB1)	<b>Fisheries Management Office:</b> Lac La Biche	

## Background

Whitefish Lake is approximately 45 km south of the Hamlet of Lac La Biche and is part of the Amisk River watershed. There is a recreational and domestic fishery on this lake and historically there was a commercial fishery from 1942 to 1992.

The lake is very deep, with an average depth of 13.3 m and a maximum depth of 42.7 m.

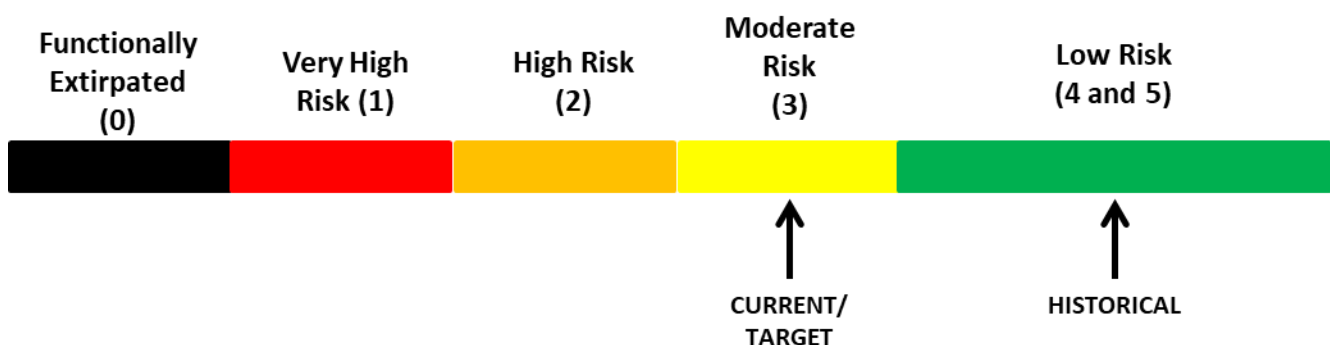
Whitefish Lake is located adjacent to the Whitefish Lake Indian Reserve #128 and the Kikino Metis settlement. There is a residential subdivision and two campsites at the lake. Silver Birch resort has one boat launch, six cabins, and 90 campsites. Paradise Cove has a boat launch and approximately 150 seasonal and daily sites.

The walleye population in Whitefish Lake was classified as collapsed in the 1990's and a catch and release regulation implemented. A Special Harvest Licence was implemented in 2012 to allow limited harvest of the recovering population. Surveys of the lake completed in 2004, 2009, 2012 and 2016 show the walleye population is increasing but Northern Pike population is decreasing.

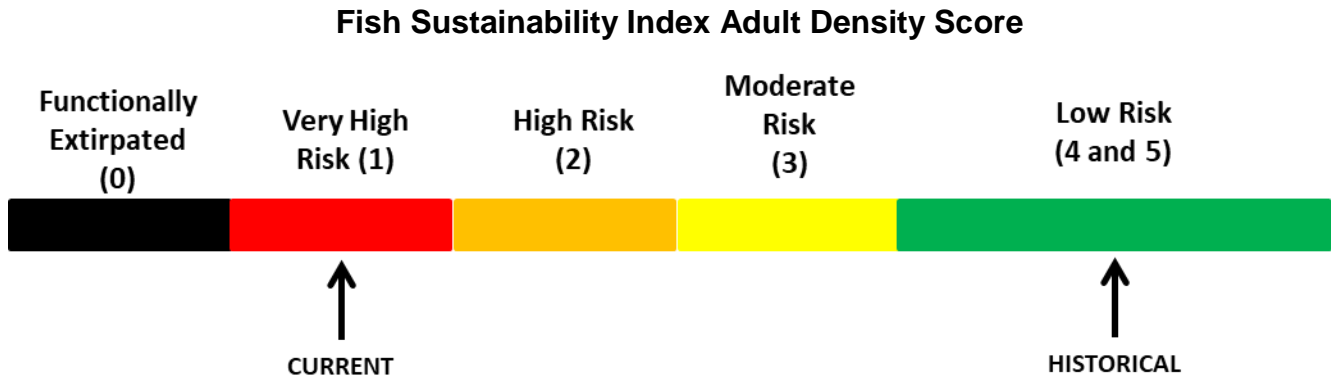
## Fish Population Status

### Walleye – Adult Abundance

#### Fish Sustainability Index Adult Density Score



## Northern Pike – Adult Abundance



**Yellow Perch- Adult Abundance - Undetermined**  
**Lake Whitefish- Adult Abundance – Undetermined**  
**Burbot- Adult Abundance - Undetermined**

## Recreational Fishery Management Objectives

The **focal species** for recreational management is **Walleye**. The secondary species managed for recreational objectives are Northern Pike and Yellow Perch. These sport-fisheries are directly assessed at intervals, and therefore are actively managed. The **Overharvest Protection Need** is assessed as **Moderate**.

**Walleye** - The recreational fishery management objective for walleye is **Sustainable Harvest**. The corresponding FSI score for the current mature density of walleye was assessed as **Moderate Risk** to sustainability. The Walleye population is currently meeting the status and criteria for the objective of a sustainable harvest fishery. The current management action is a **Special Harvest Licence**.

**Northern Pike** - The recreational fishery management objective for northern pike is **Sustainable Harvest**. The corresponding FSI score for the current mature density of northern pike was assessed at (1) **Very High Risk** to sustainability. The pike population is currently not meeting the status and criteria for the objective of a sustainable harvest fishery. The current management action is recovery using **Catch and Release Regulation**

**Yellow Perch** – The recreational fishery management objective being applied is the provincial default of **Sustainable Harvest**. The status of the yellow perch population has not been assessed. The current management action is a regulation of 15 perch, any size.

**Lake Whitefish** – The recreational fishery management objective being applied is the provincial default (**Sustainable Harvest**). The status of the lake whitefish population has not been assessed. The current management action is a regulation of 10 lake whitefish, any size.

**Burbot** – The recreational fishery management objective being applied is the provincial default (**Sustainable Harvest**). The status of the burbot population has not been assessed. The current management action is a regulation of 10 burbot, any size.

## Management Summary

Management Priority	Species	Overharvest Protection Need	Management Action	Sport Fishing Harvest Regulation
1	Walleye	Moderate	Maintenance – Sustainable Harvest	SHL
2	Northern pike	Moderate	Recovery – Sustainable Harvest	Current regulation 1>63 Proposed regulation Catch and Release
3	Yellow Perch*	Moderate	Maintenance – Sustainable Harvest	15 any size
4	Lake Whitefish*	Moderate	Maintenance – Sustainable Harvest	10 any size
5	Burbot	Moderate	Maintenance – Sustainable Harvest	10 any size

\*Recreational management objectives for lake whitefish, yellow perch, and burbot have not been fully developed into management frameworks, and will be subject to change pending on-going work and development. However, general action statements have been listed for these species within the context of relative abundance, catch rates and trends associated with index netting assessments, in relation to the management of these species at a provincial level.